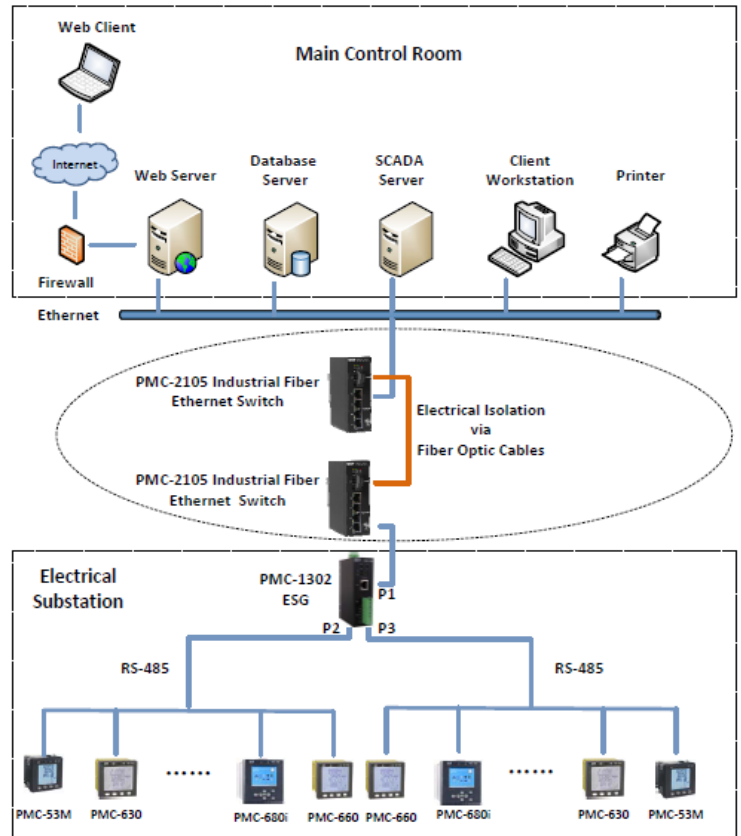




## Typical Application



## Overview

The PMC-2105 Industrial Fiber Ethernet Switch supports plug-and-play capability with a single 100BaseFX fiber port and four 10/100BaseT ports. The PMC-2105 has been designed specifically with industrial automation in mind and therefore provides un-surpassed performance and reliability under the harshest industrial or commercial environments.

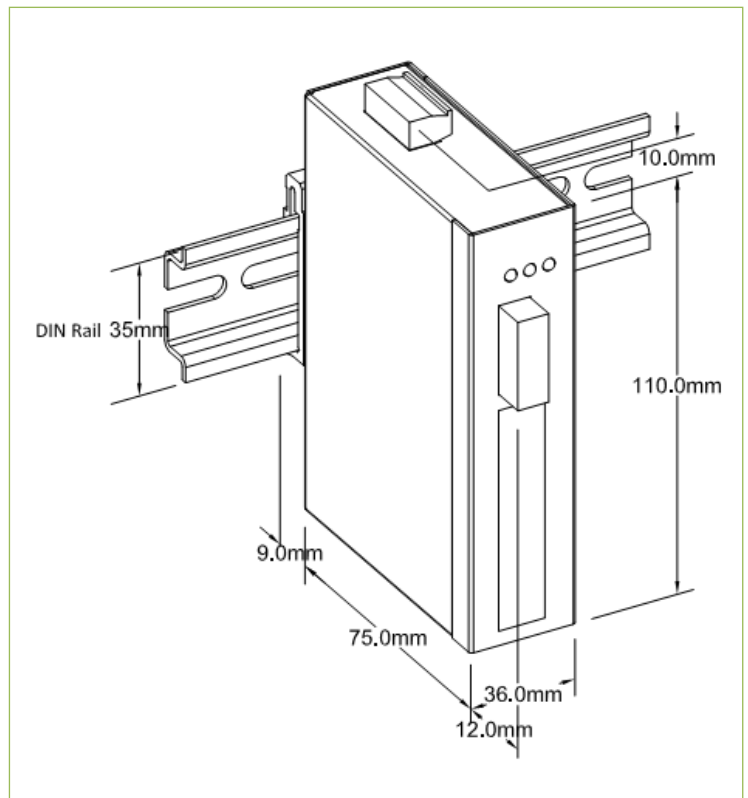
## Features

- One 100BaseFX Fiber Ethernet Port supporting Full-Duplex operation
- Four auto-sensing 10/100BaseT Ethernet ports
- Compliance with IEEE802.3 and IEEE802.3u standards
- Act, Link and PWR LED Status Indicators
- 1kB MAC Address Table Size and 1MB Cache Buffer
- Plug and Play
- Standard DIN-Rail Mount
- 6kV ESD protection
- 1.5kV isolation protection for Ethernet ports 🙌
- Extended operating temperature

## Applications

- Fiber Ethernet conversion with integrated 4-port switch
- Extend Ethernet segment up to 60km
- Provide electrical isolation for substation, industrial, factory and building automation

## Dimensions and Installation





**Technical Specifications**

Standards	
IEEE	802.3, 802.3u
Ethernet Interface	
Fiber Port	1x100BaseFX with ST connectors
Ethernet Port	4x10/100BaseT with RJ45 connectors
Cable	
10/100BaseT	CAT5, CAT5e with a maximum 100m distance
Multi-Mode Fiber	Supporting a distance of 2km
Wavelength, Size	1310nm, 62.5/125 μm and 50/125μm
Single-Mode Fiber	Supporting a distance of 20km / 60km
Wavelength, Size	1310nm, 9/125 μm
Front Panel LED Indicators	
PWR (Red)	Power supply indicator
Link (Green)	Fiber port connection status
Act (Yellow)	Fiber port activities
Power Supply (L+, N-)	
Standard	95-250VAC/DC, 47-440Hz
Optional	9-30VDC@ 200mA
Burden	<3W
Protection	
ESD Protection	6kV
Isolation Protection	1.5kV for Ethernet Ports
Environmental Conditions	
Operating Temp.	-25°C to +70°C
Storage Temp.	-40°C to +85°C
Humidity	0% to 95% non-condensing
Mechanical Characteristics	
Casing	Galvanized Iron
Dimensions (WxHxD)	36x110x75 mm (1.42"x4.33"x2.95")
Weight	0.4 kg
Mounting	DIN-Rail Mount
IP Rating	30

**Standards of Compliance**

Safety Requirements		
Insulation	IEC 60255-5-2000	
Dielectric Test	2kV@1minute	
Insulation Resistance	100MΩ	
Impulse Voltage	5kV, 1.2/50us	
Electromagnetic Compatibility		
Electrostatic Discharge	IEC 61000-4-2:2001 Level III	
Radiated Fields	IEC 61000-4-3:2002 10V/m	
Fast Transients	IEC 61000-4-4:2004 Level III	
Surges	IEC 61000-4-5:2005 Level III	
Conducted Disturbances	IEC 61000-4-6:2006 Level III	
Magnetic Fields	IEC 61000-4-8:2001 Level IV	
Oscillatory Waves	IEC 61000-4-12:1995 Level III	
Mechanical Tests		
Vibration Test	Response	IEC 255-21-1:1988 Level I
	Endurance	IEC 255-21-1:1988 Level I
Shock Test	Response	IEC 255-21-2:1988 Level I
	Endurance	IEC 255-21-2:1988 Level I
Bump Test	IEC 255-21-2:1988 Level I	

**Ordering Information**

Product Code		Description
PMC-2105 Industrial Fiber Ethernet Switch		
<b>Power Supply</b>		
2	95-250VAC/VDC, 47-440Hz	
A	9-30VDC	
<b>Fiber Connector</b>		
ST	ST Connector	
<b>Fiber Port</b>		
M002	Multi-mode, 2km	
S020	Single-mode, 20km	
S060	Single-mode, 60km	
PMC-2105 - 2 - ST - M002	PMC-2105-2-ST-M002 ( Standard Model)	

**Ceiec Electric Technology Inc.**

A: 8/F, WestSide, Building 201, Terra Industrial & Tradepark  
Che Gong Miao, Shenzhen, Guangdong, P.R.China 518040  
T: +86.755.8341.5187  
F: +86.755.8342.0291  
E: [sales.international@ceiec-electric.com](mailto:sales.international@ceiec-electric.com)  
W: [www.ceiec-electric.com](http://www.ceiec-electric.com)

**Your Local Representative**

Revision Date: June 18, 2012